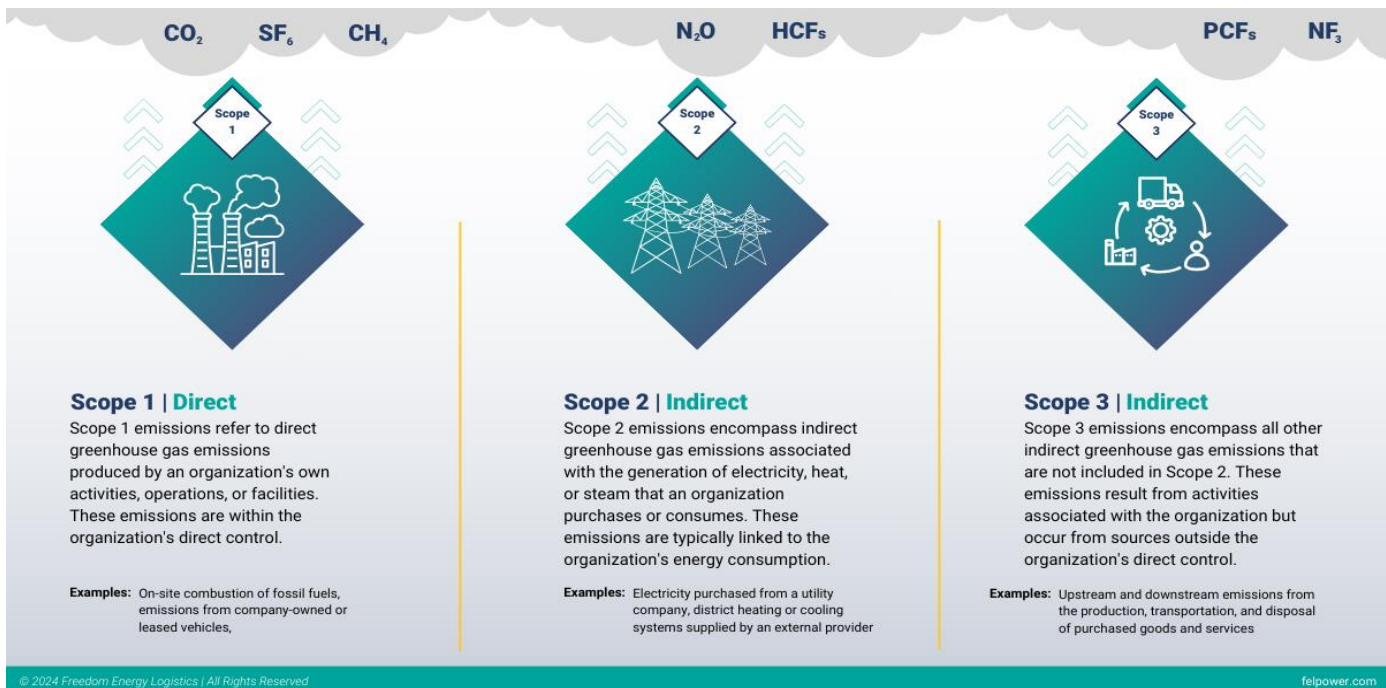


# Understanding Common Greenhouse Gases

Common greenhouse gases, such as carbon dioxide (CO<sub>2</sub>), methane (CH<sub>4</sub>), and nitrous oxide (N<sub>2</sub>O), contribute to global warming by trapping heat in the Earth's atmosphere. To effectively manage and reduce greenhouse gas emissions, organizations categorize them into Scope 1, Scope 2, and Scope 3 emissions.

- **Scope 1 Emissions:** These are direct emissions from sources within an organization's control, like on-site fuel combustion and industrial processes.
- **Scope 2 Emissions:** These encompass indirect emissions linked to purchased electricity and energy consumption.
- **Scope 3 Emissions:** These include all other indirect emissions associated with an organization's activities, such as supply chain, employee commuting, and business travel.

Our team collaborates closely with organizations to identify opportunities for you to achieve your Scope 2 emissions requirements. We recommend cleaner energy sources, energy-efficient technologies, and sustainable practices, ultimately helping our clients achieve their emission reduction and environmental goals, and corporate responsibility commitments.



(877) 292-4232

